

# CALLE TENERÍAS

Zona Centro, San Miguel de Allende, Gto., México

Mikki Okamoto | Urenna Evuleocha



## PROBLEM DEFINITION | DEFINICIÓN DEL PROBLEMA

The Tenerías site is in a **key position** of a central neighborhood that allows it to provide **desired technological resources** and **historical discovery** for the residents of San Miguel, while also welcoming visitors. This project will **adapt the varying existing conditions** of the site such as the level changes and overall size and use them as inspiration to create a more **open interchangeable project**. This potential program will provide the community with a growing knowledge that can guide them into the future.

## USERS | USUARIOS

We define **youth(juventud)** as the adolescent group of the residential population.

We define **locals(locales)** as people who have lived here since youth.

We define the **indigenous(indígena)** people as those with Mexican ancestors who continue to live here today.

We define **expatriates(expatriados)** as people from different countries who relocated to San Miguel.

We define **tourists (turistas)** as short-term visitors.



## BACKGROUND RESEARCH | INVESTIGACIÓN DE FONDO

Public school system in Mexico - run by Secretariat of Public Instruction, SEP  
Attendance mandatory for students aged 6-15  
Pre-primary school = 3-5  
Elementary = 6-12  
Secondary = 13-15  
Many expats children go to international schools

Municipality with the highest level of income inequality in all of Mexico  
Municipality of San Miguel has a number of rural communities  
These communities need water, food, security, transportation, employment, and community education to become self-sustaining, depend on San Miguel  
Commute to school by children and work by parents can be very difficult on education, as well as families where the education level is low already  
More than 49% of the population without a basic education  
Many children drop out of secondary education to become additional income-earners for their families

Villages have no water while nearby Mexican farms with products for American supermarkets use plenty of water

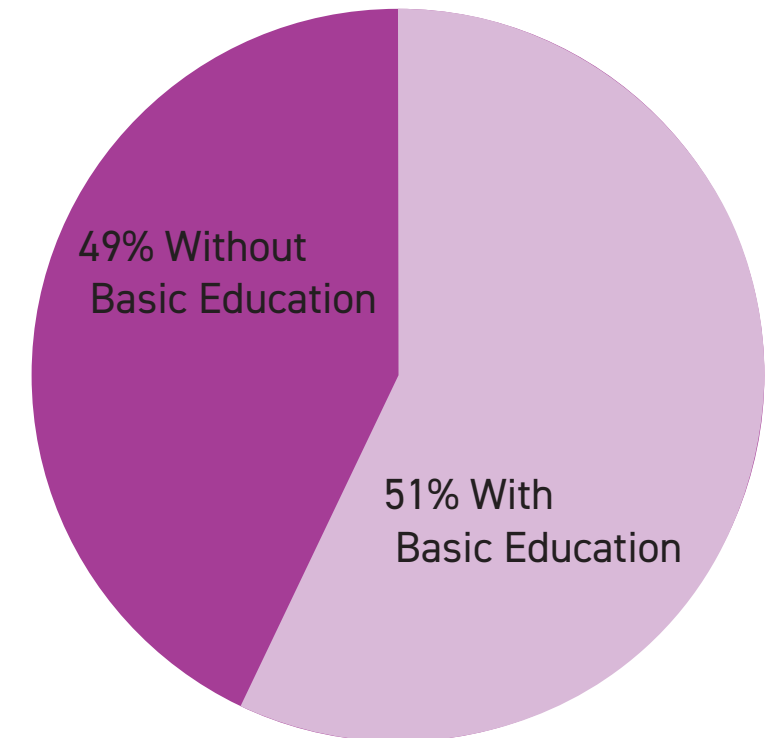
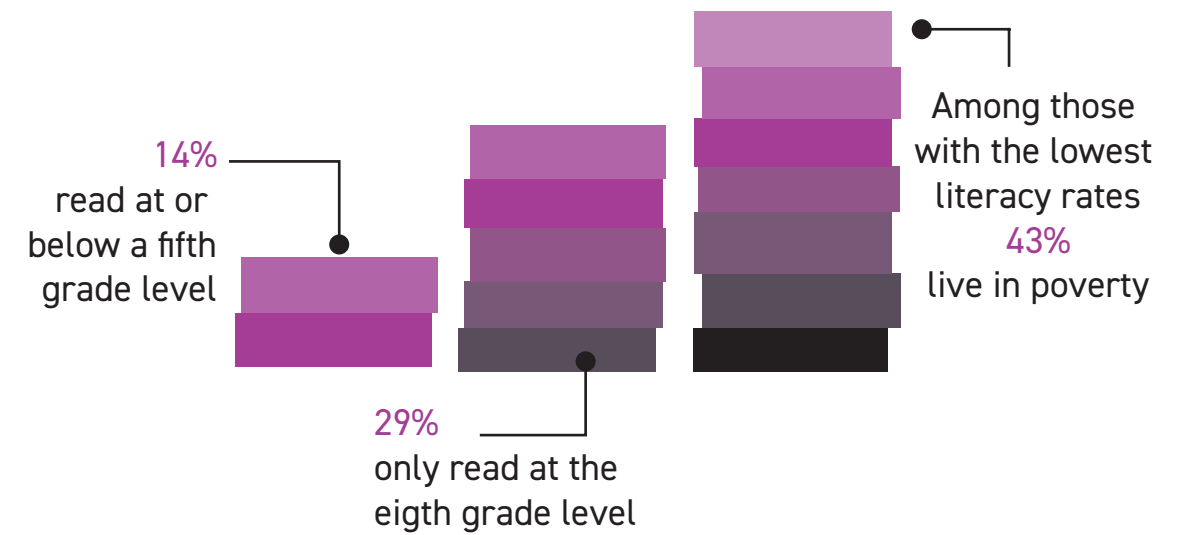
For most rural communities water is delivered twice a week to a common well that serves multiple communities.

Many children drop out of secondary education to become additional income-earners for their families

## SOLUTION STATEMENT | DECLARACION DE SOLUCION

One of the most intriguing architectural concepts we have found here in San Miguel is the **drastic change** between the **solid planar street facade** and the **open, adventurous interior**. In our own perspective we hope to **emulate this ideal**, balancing exterior space, protected areas and completely closed off spaces. To **guide the visitor** through these spaces, we hope to utilize architectural elements such as a water feature to flow around and through our program, **intertwining path with aesthetic**.

**We hope to create a project that is open to a wide range of visitors and provides an interesting pause while walking between the Paroquia and the residential area.**



## PROGRAM | PROGRAMA

### TECHNOLOGY nTECNOLOGÍA

- computers labs accessible to the public
- stable wifi
- user: youth, locals
- 200 m<sup>2</sup>



### FOOD/ENTRY nCOMIDA/ENTRADA

- café space with exterior and interior spaces
- includes a kitchen
- users: all
- 200 m<sup>2</sup>



### EDUCATION nEDUCACIÓN

- classroom spaces (2): learn about technology as well as mexican history classes
- community meeting rooms (3): available to all, seminars, non-profits
- volunteer center
- users: locals, indigenous, youth
- 500 m<sup>2</sup>

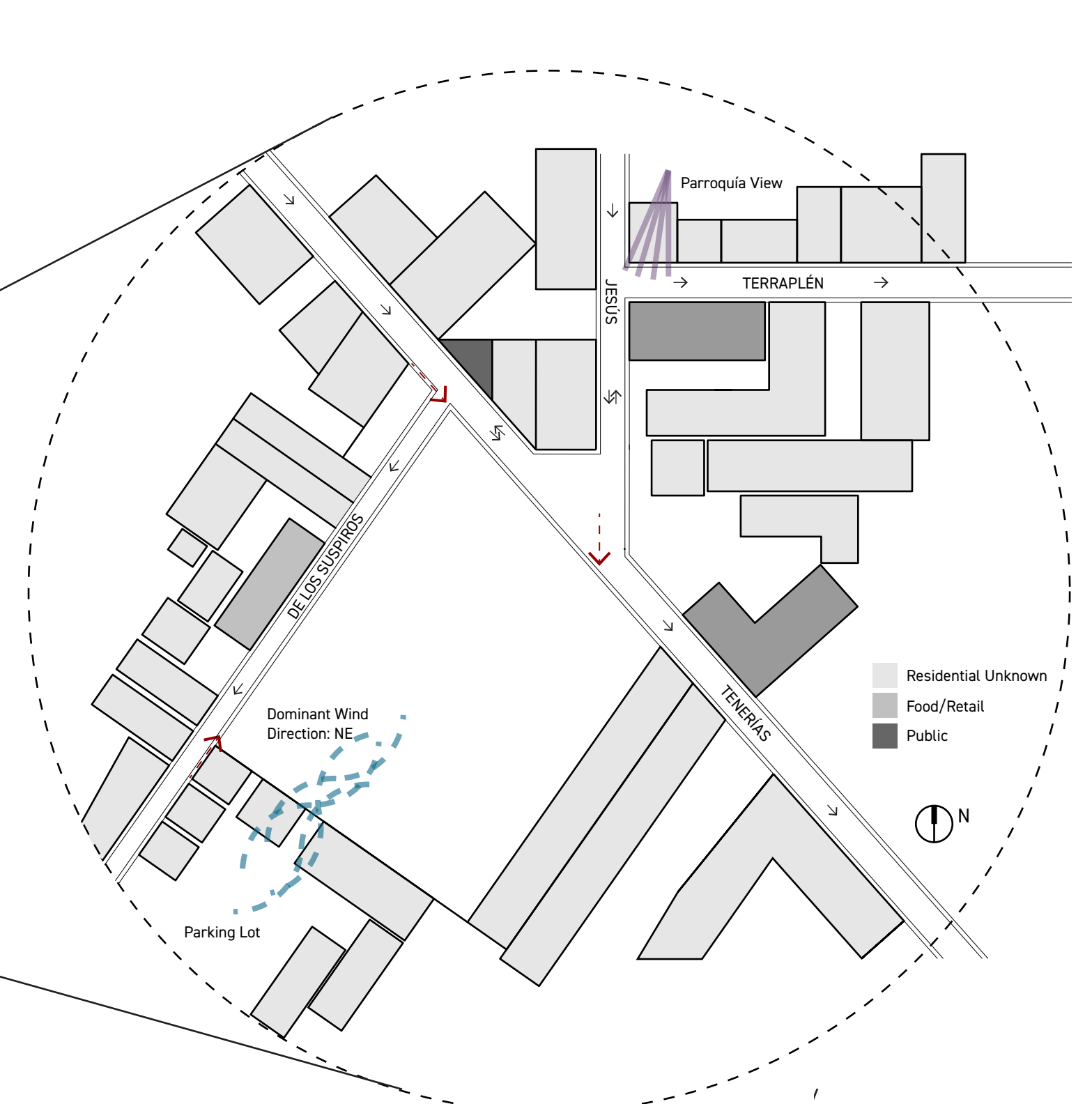
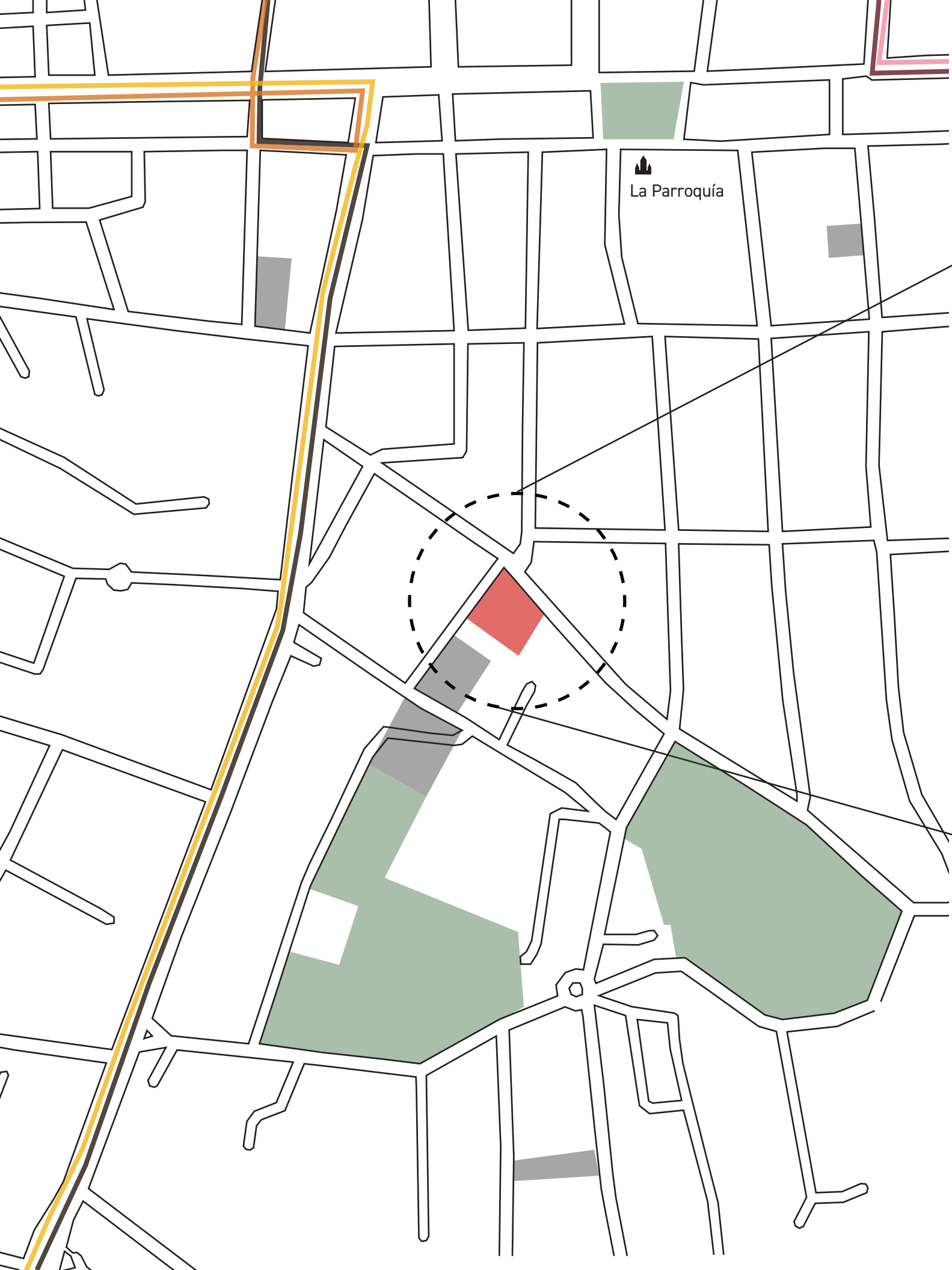


### ENTERTAINMENT nENTRETENIMIENTO

- museum spaces
  - historical indigenous astronomical spaces
  - San Miguel history: water history application, real poverty/education statistics
- users: all
- 650 m<sup>2</sup>



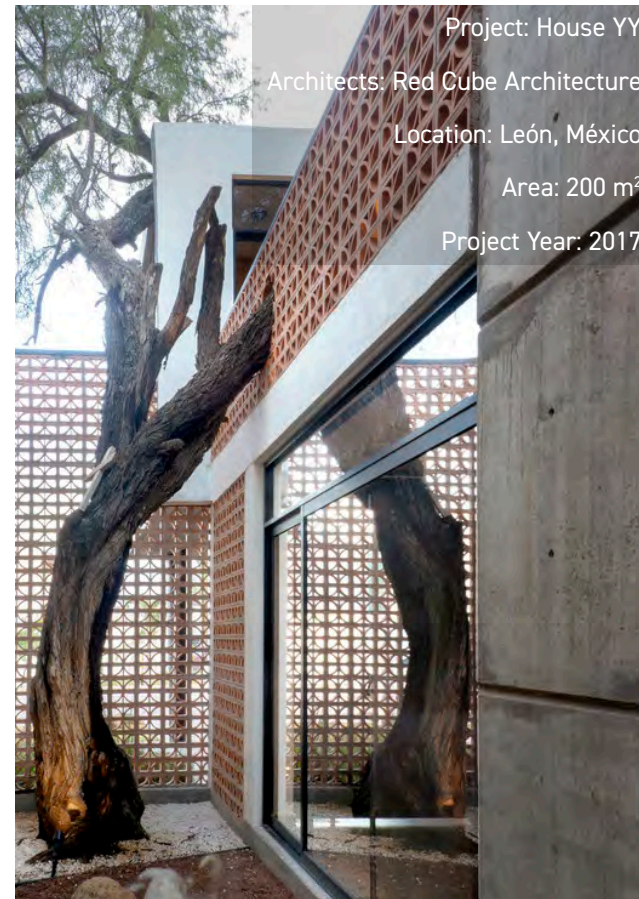
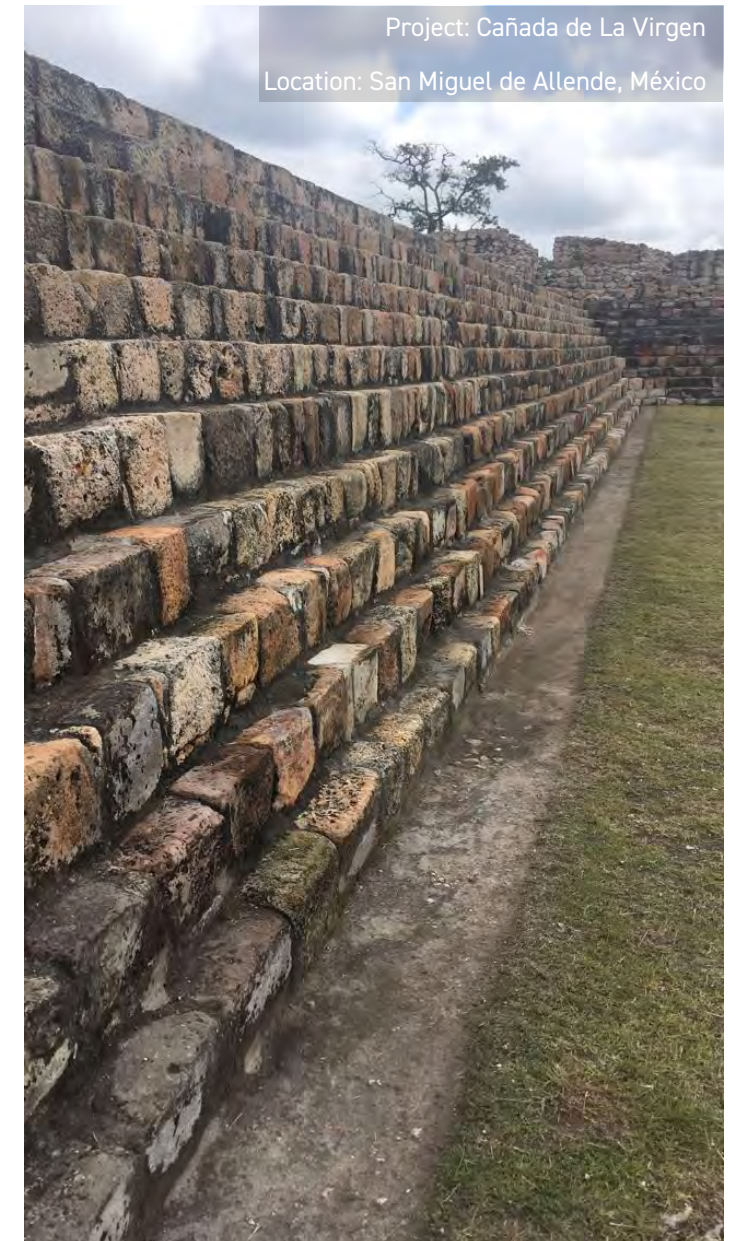
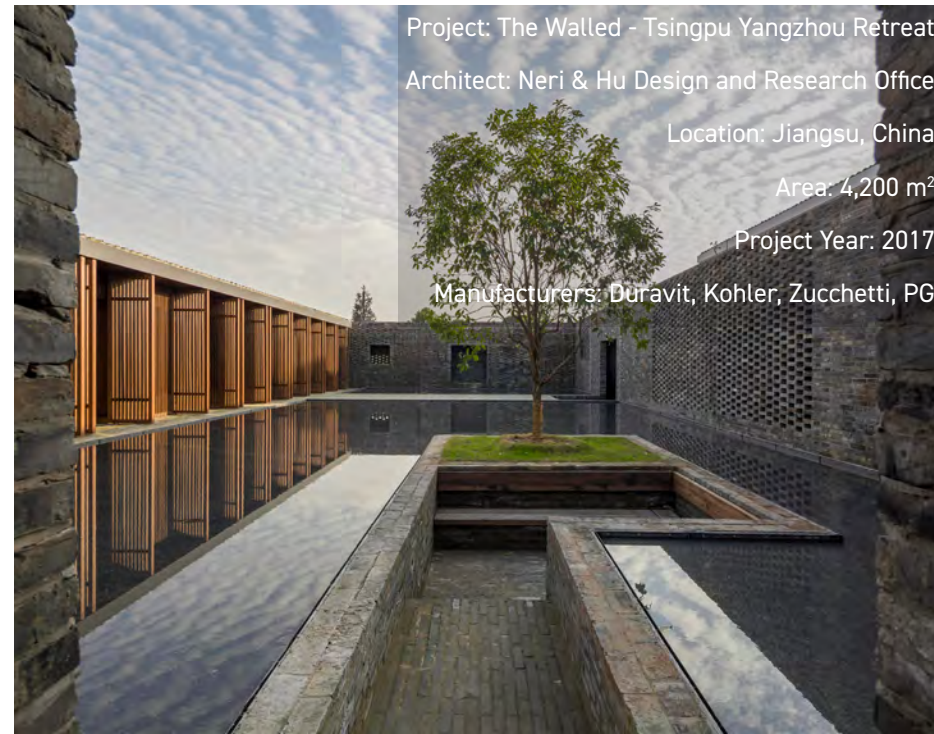
### BATHROOMS/CIRCULATION



- R-10 Malanquin - Centro
- R-4 Luis Donaldo Colosio - San Antonio
- R-1 Malanquin - Centro
- R-7 Allende - Jardines II
- R-9 Jardines II - Centro
- Site
- Parking Lots
- Parks

CONTEXT PLAN | PLAN DE CONTEXTO

# PRECEDENTS | PRECEDENTES

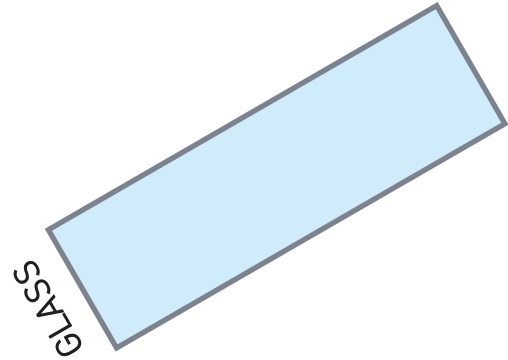
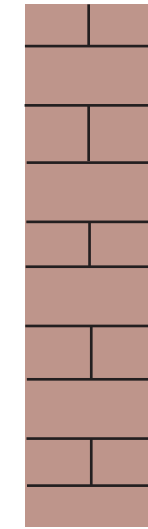
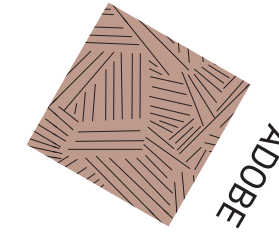
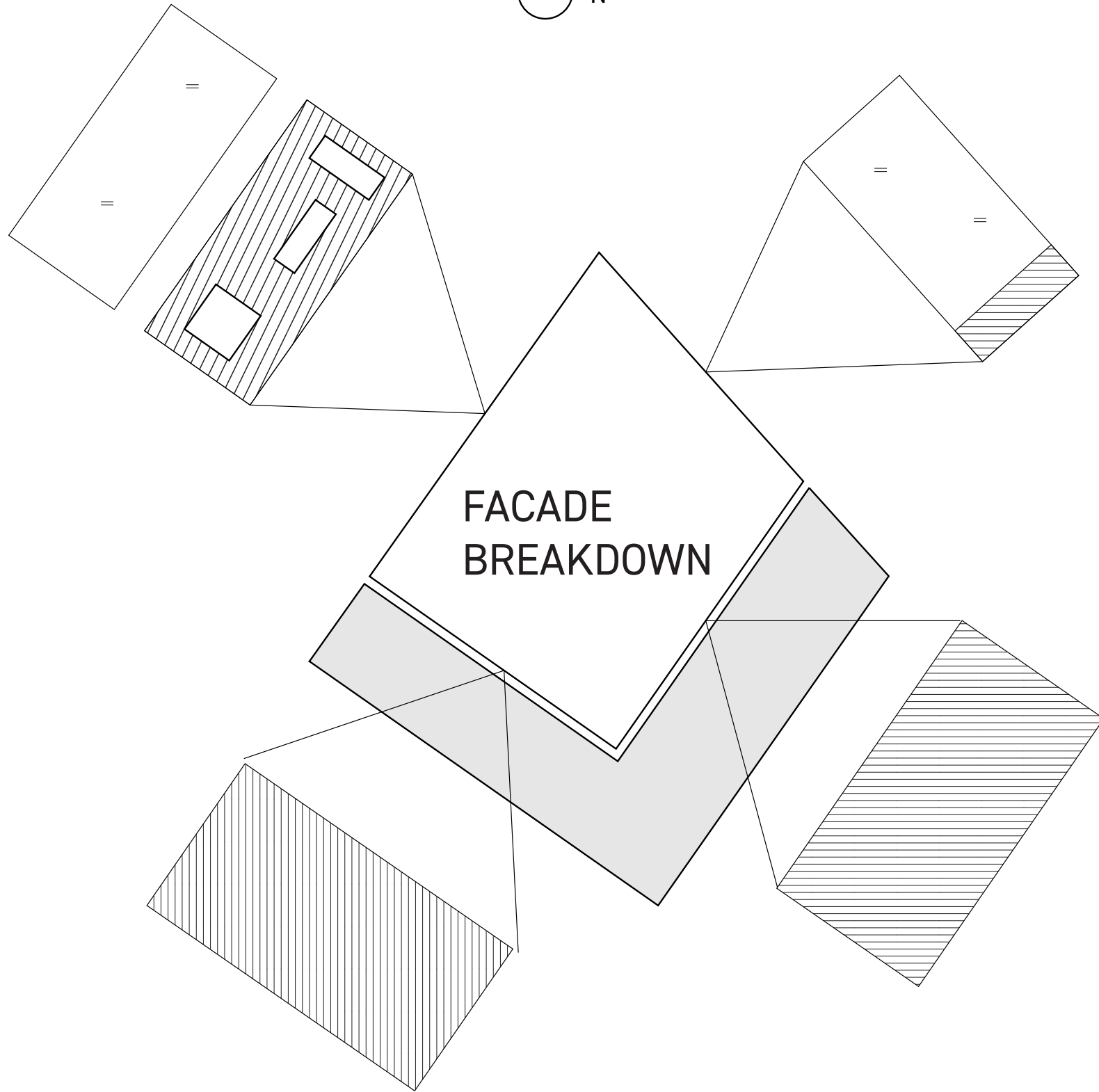
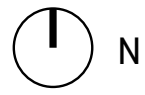




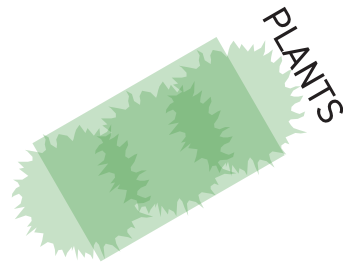
## MATERIALS:

We are hoping to emulate materials used in San Miguel such as adobe and brick. We hope to use a concrete base structural system with steel rebar within. Adobe and brick would act as wall filler materials.

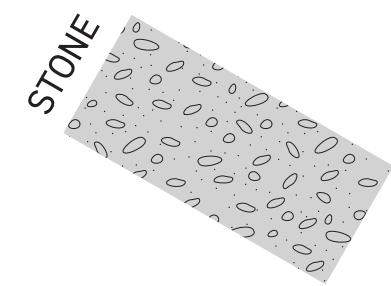
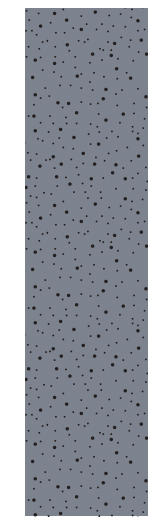
- Adobe Bricks (walls)
- Green Walls (exterior/protected walls)
- Burnt Clay Bricks (walls & screens)
- Water Feature (aesthetic)
- Stone
- Steel (structure)
- Concrete (fireproofing/structure)



MATERIAL KEY

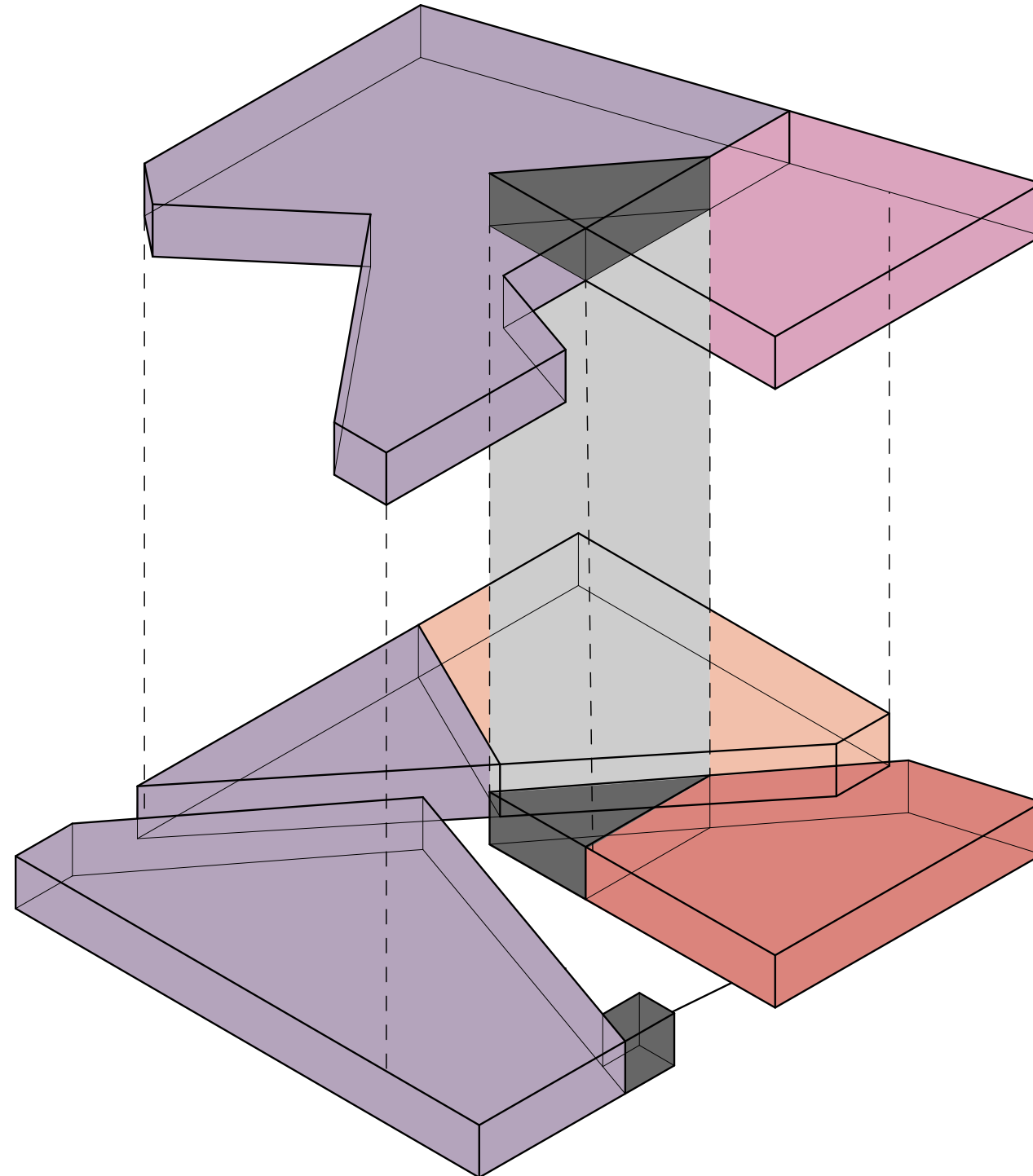


CONCRETE /STEEL



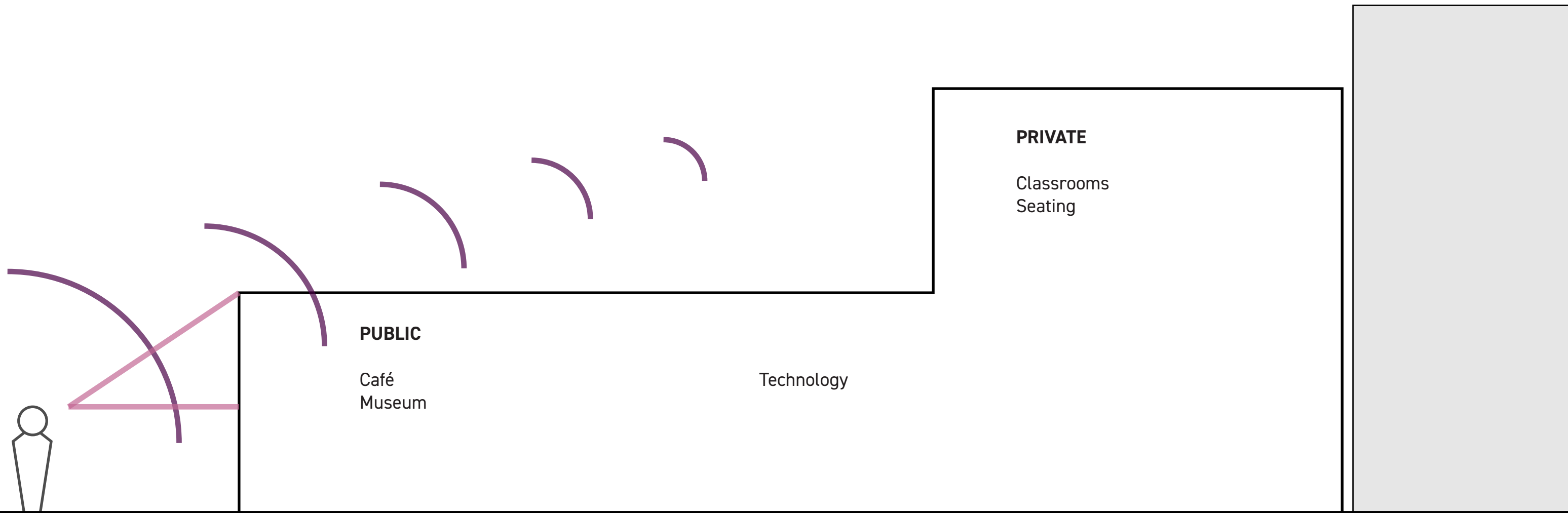


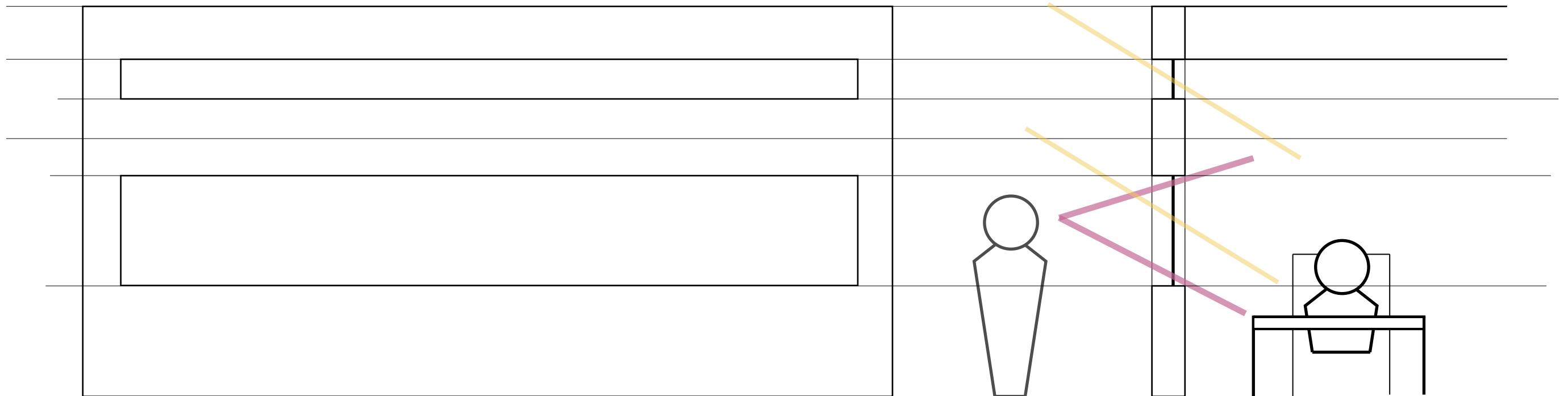
BLOCK AND STACK OVERALL PROGRAM | PROGRAMA GENERAL DE BLOQUEO Y PILA



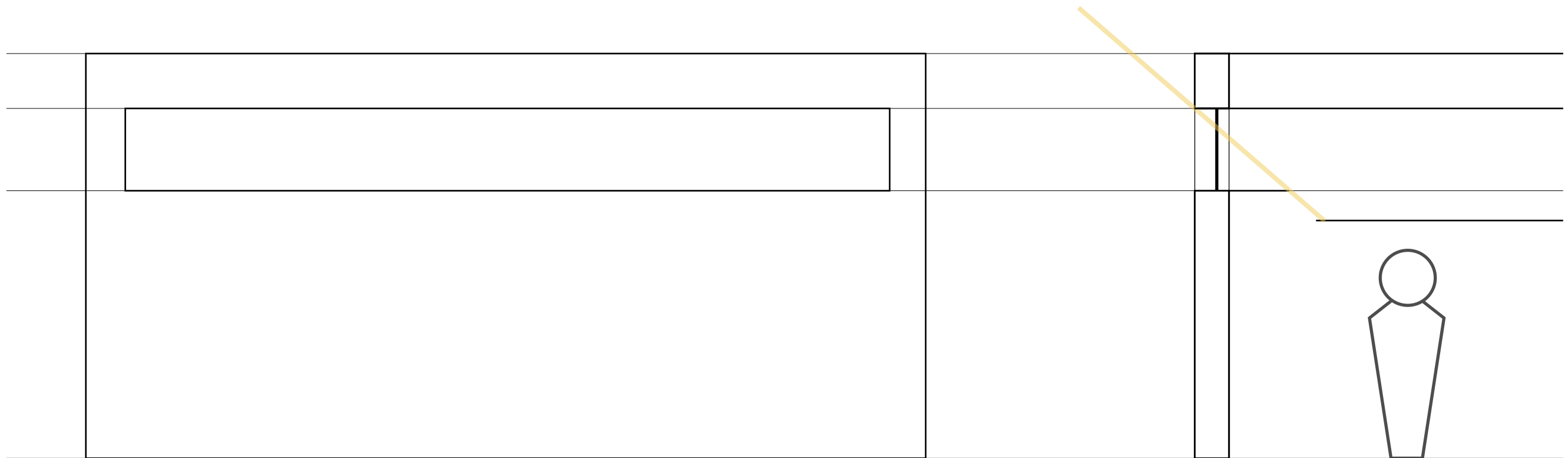
- Entertainment
- Classrooms
- Circulation
- Café
- Technology

BLOCK AND STACK OVERALL PROGRAM | PROGRAMA GENERAL DE BLOQUEO Y PILA

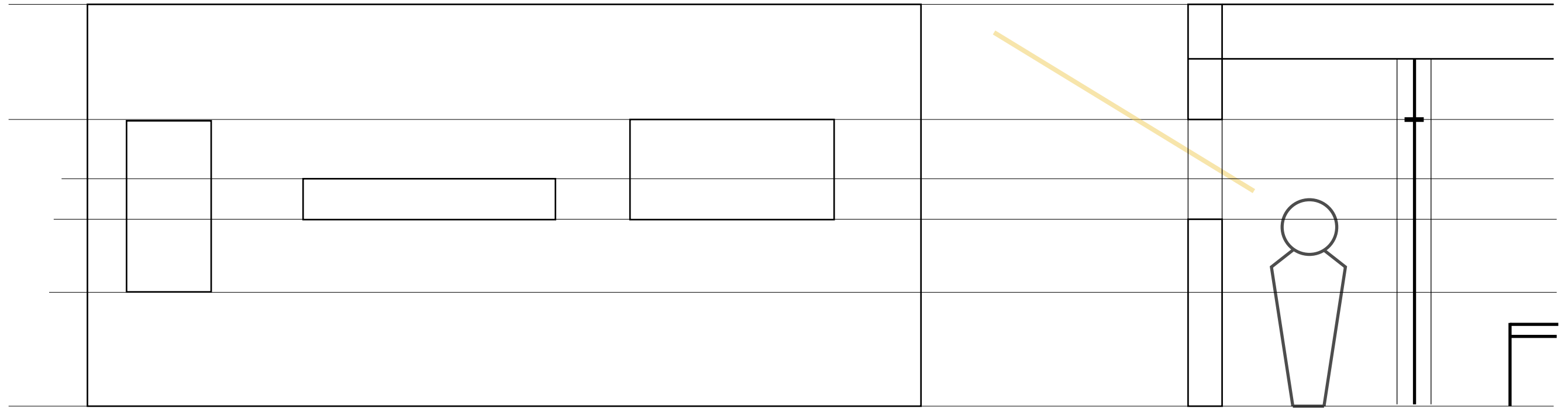




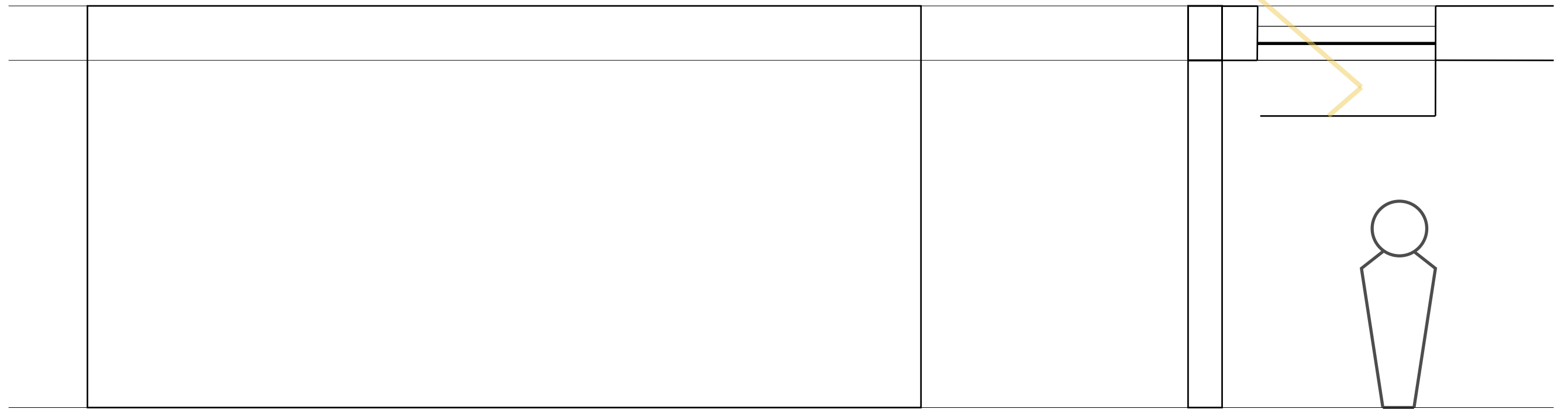
Computer Labs



Art Gallery

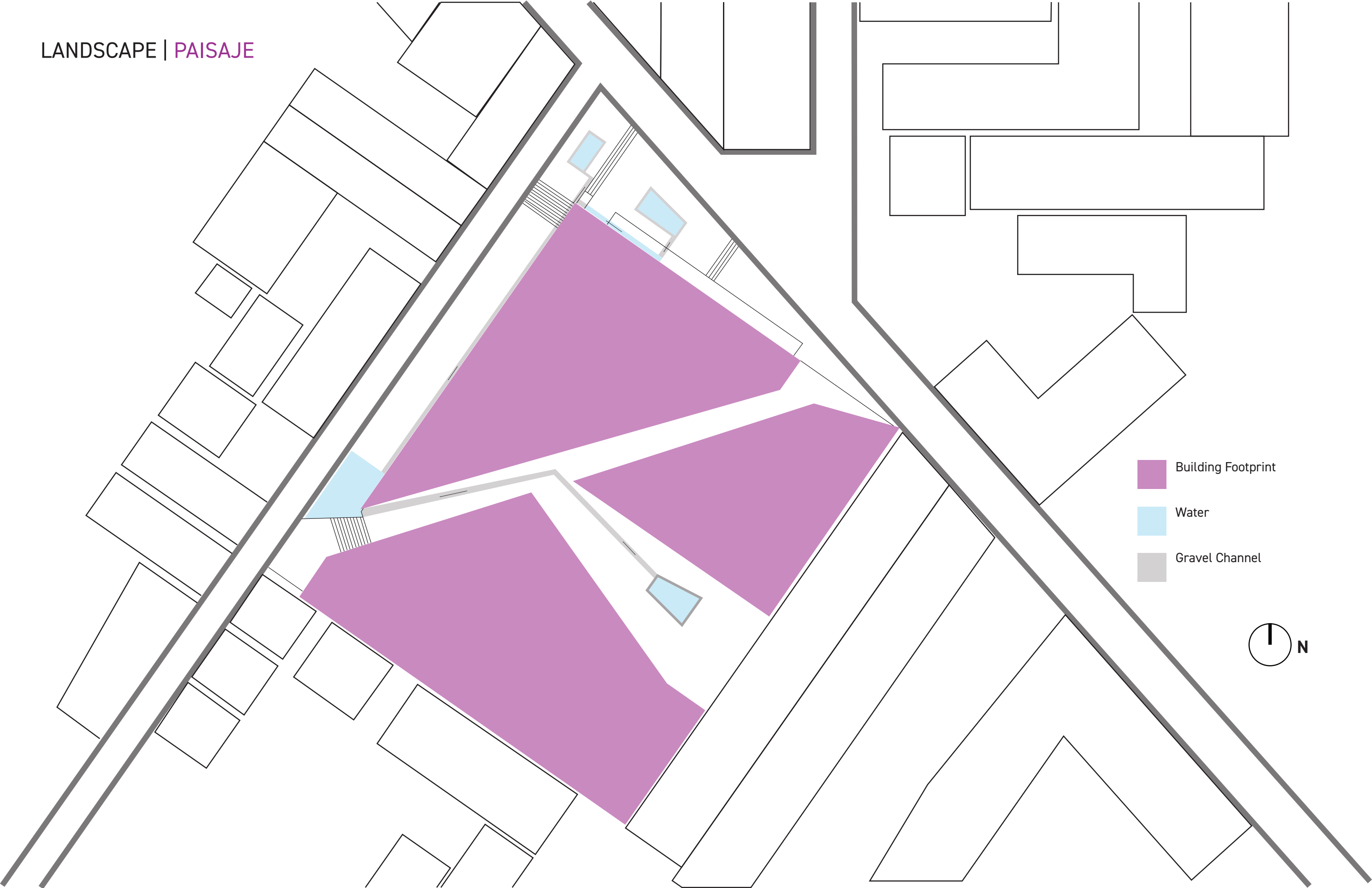


Community Meeting Rooms



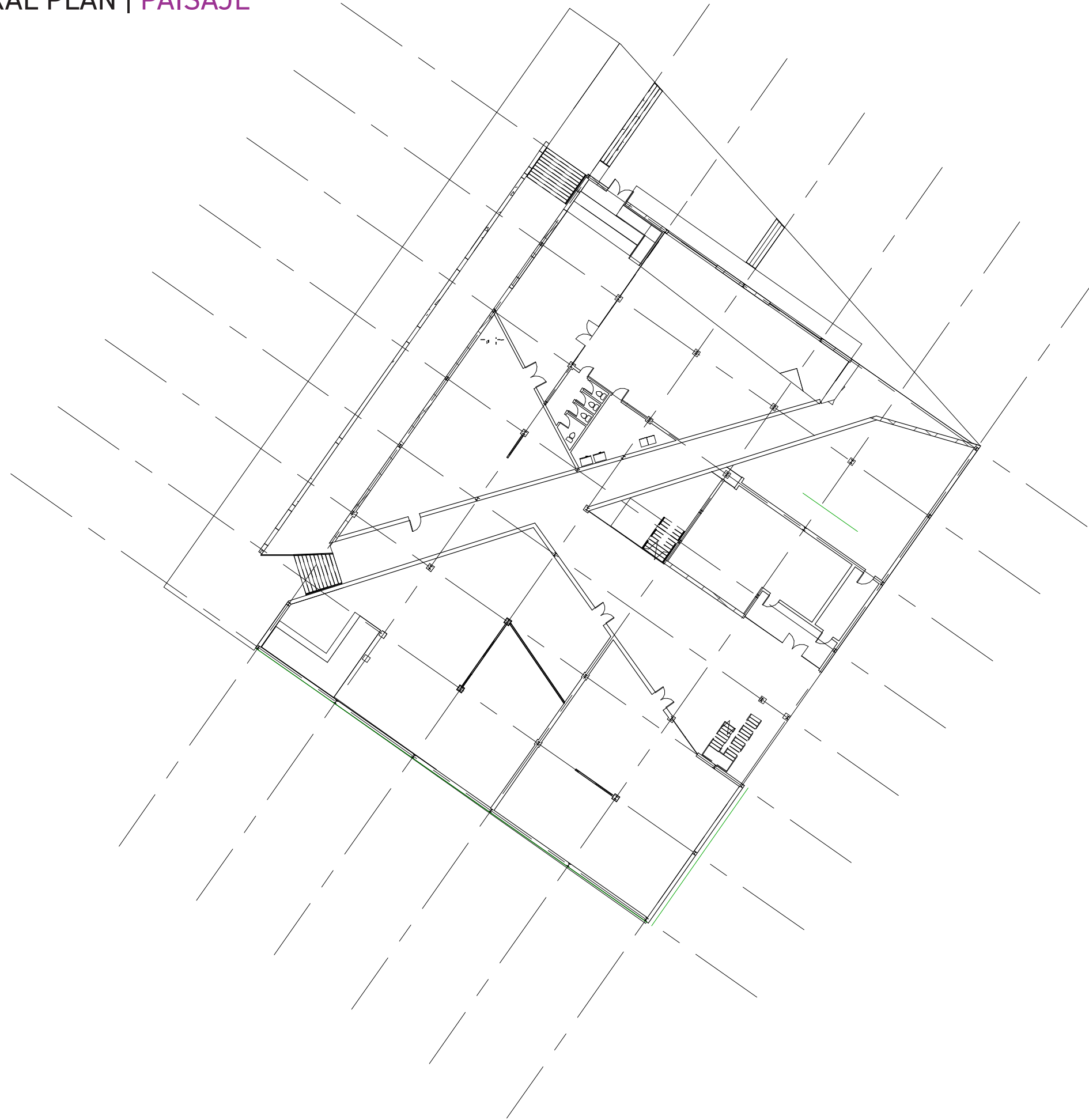
Main Gallery Space

LANDSCAPE | PAISAJE



- Building Footprint
- Water
- Gravel Channel





## STRUCTURAL GRID

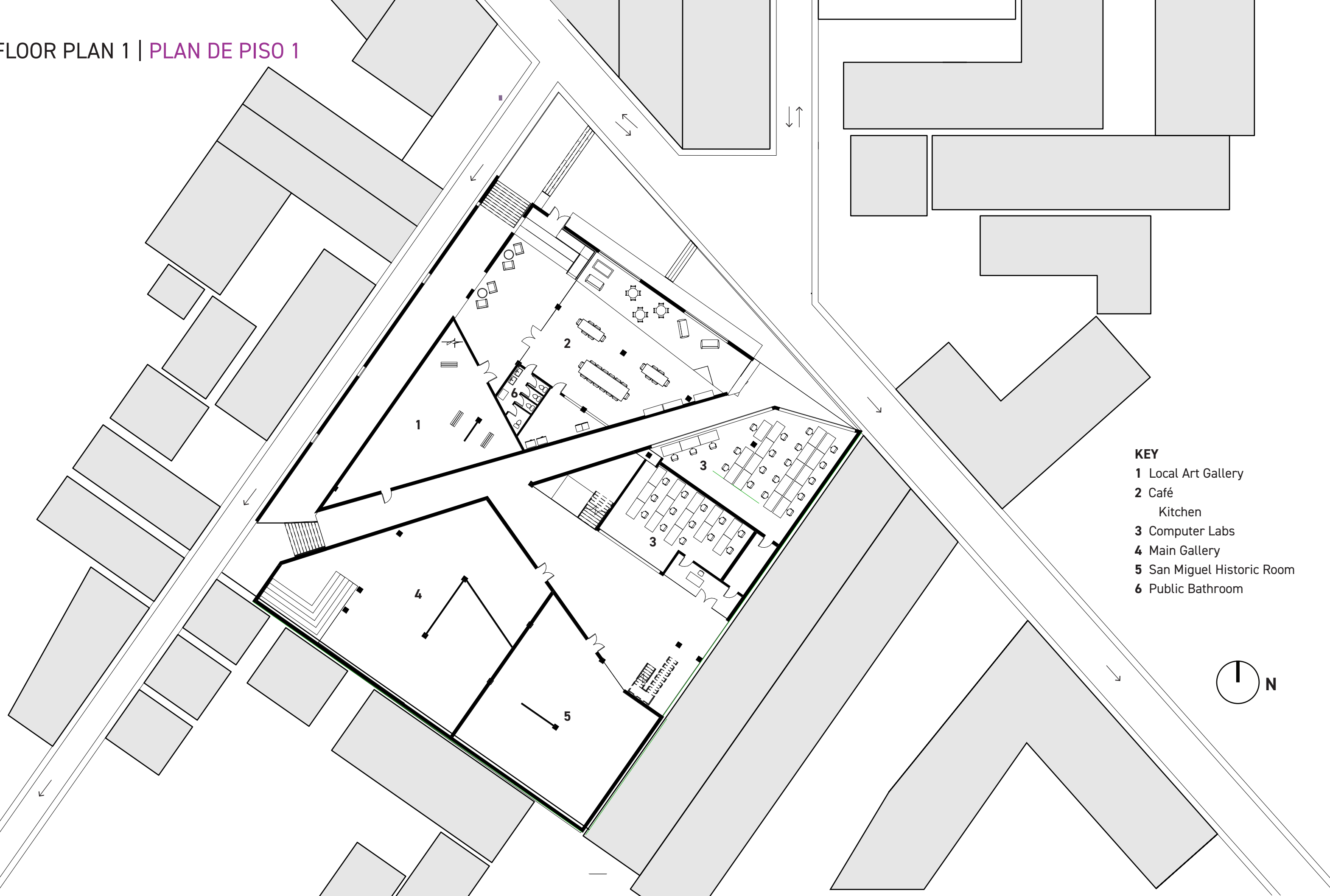
Concrete system with steel rebar.

Grid: 6.5 m x 7.5 m

Attempted to maintain grid proportions throughout project in order to minimize costs.

Relatively common structural construction type here from what we have seen. Lends itself to brick and adobe wall filler.

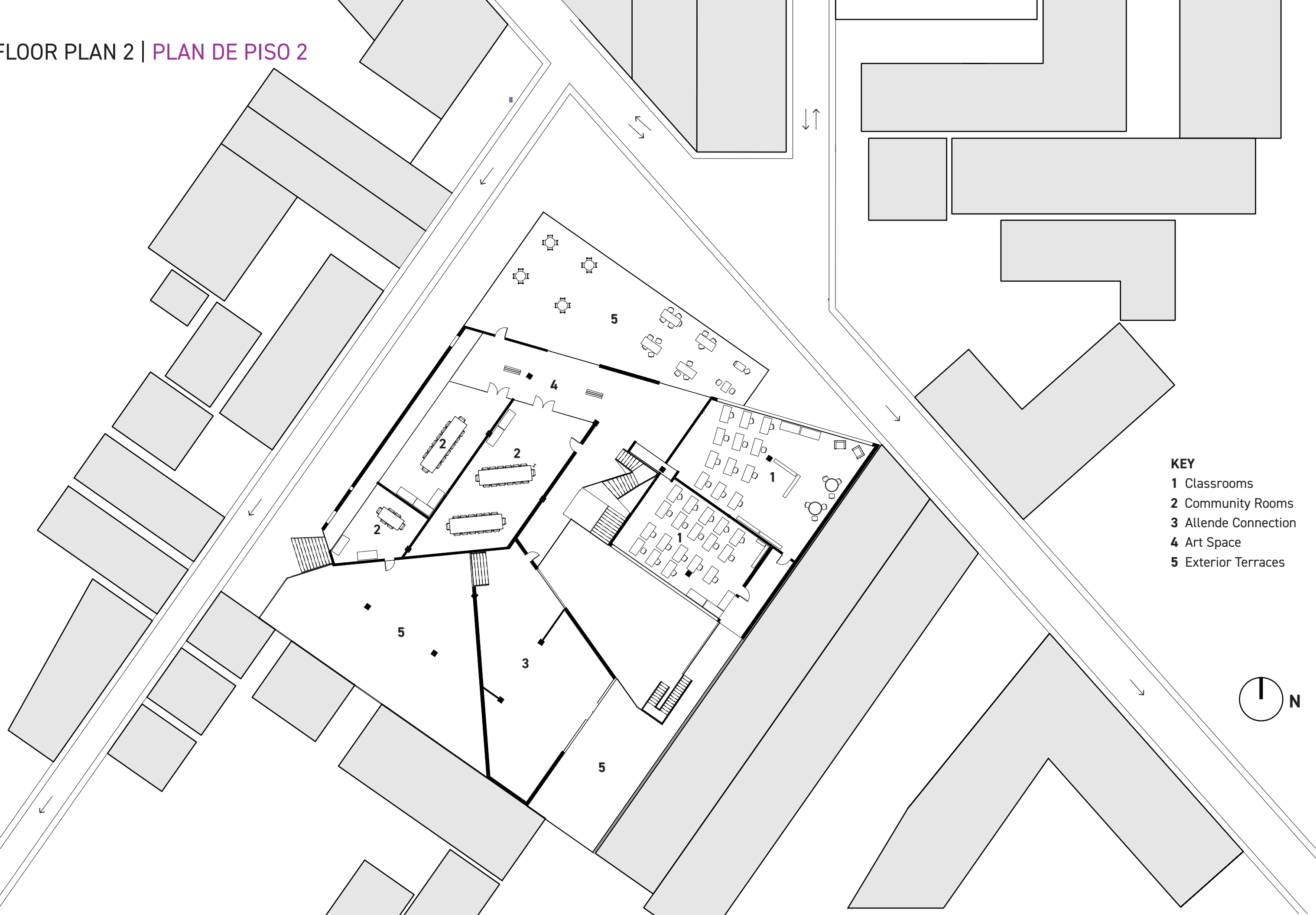
FLOOR PLAN 1 | PLAN DE PISO 1



- KEY**
- 1 Local Art Gallery
  - 2 Café  
Kitchen
  - 3 Computer Labs
  - 4 Main Gallery
  - 5 San Miguel Historic Room
  - 6 Public Bathroom



FLOOR PLAN 2 | PLAN DE PISO 2



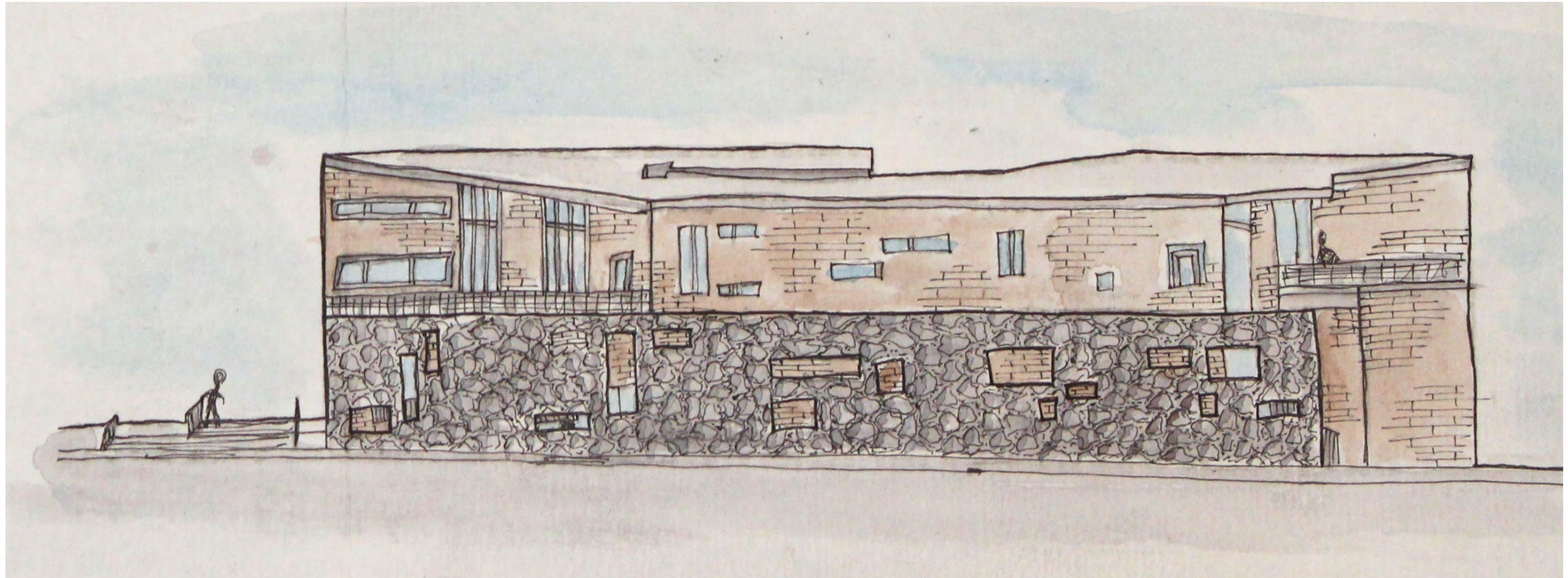
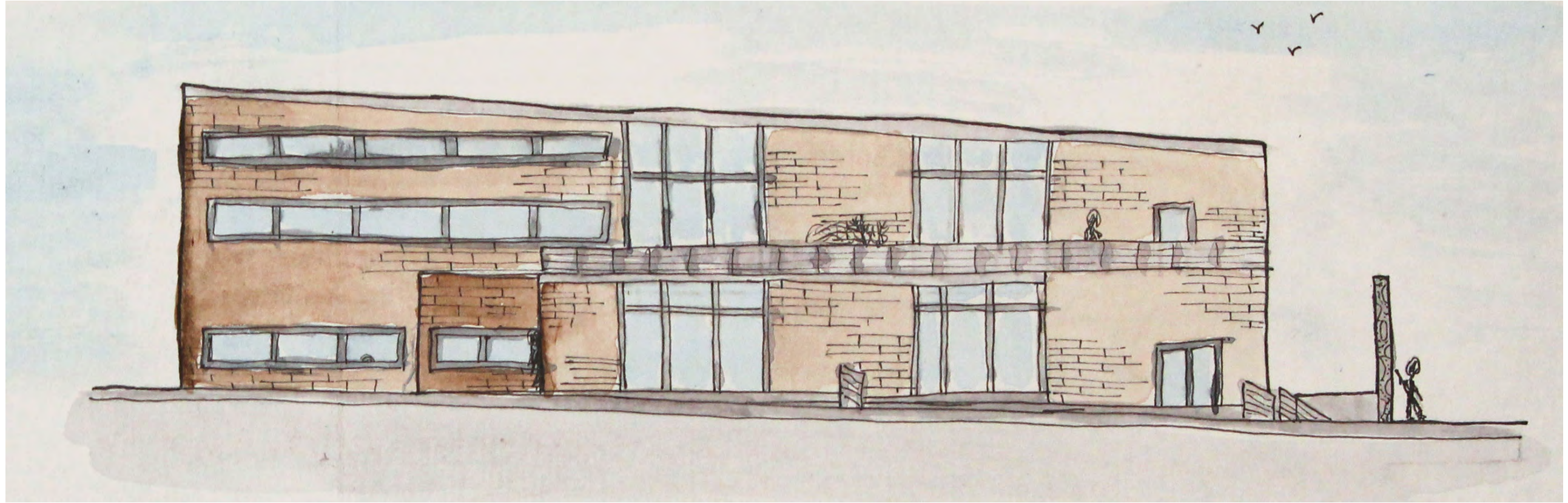
**KEY**

- 1 Classrooms
- 2 Community Rooms
- 3 Allende Connection
- 4 Art Space
- 5 Exterior Terraces





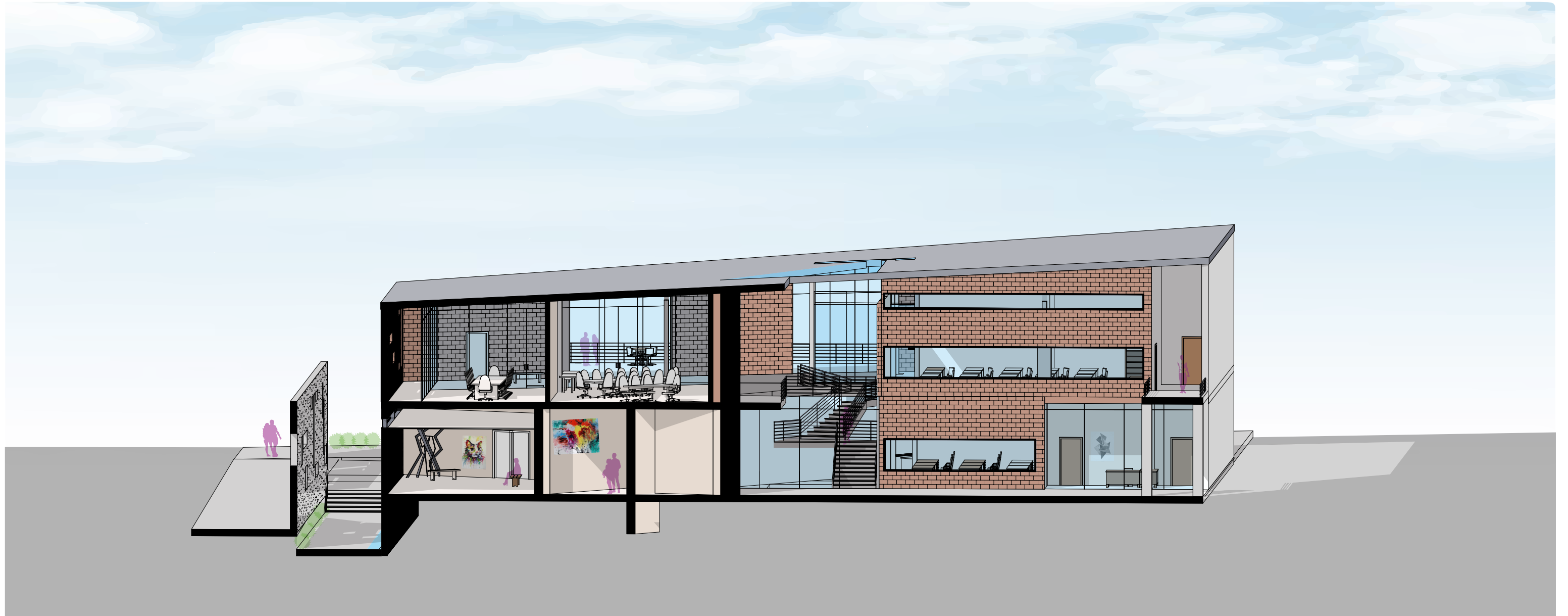
ELEVATIONS | ELEVACIONES



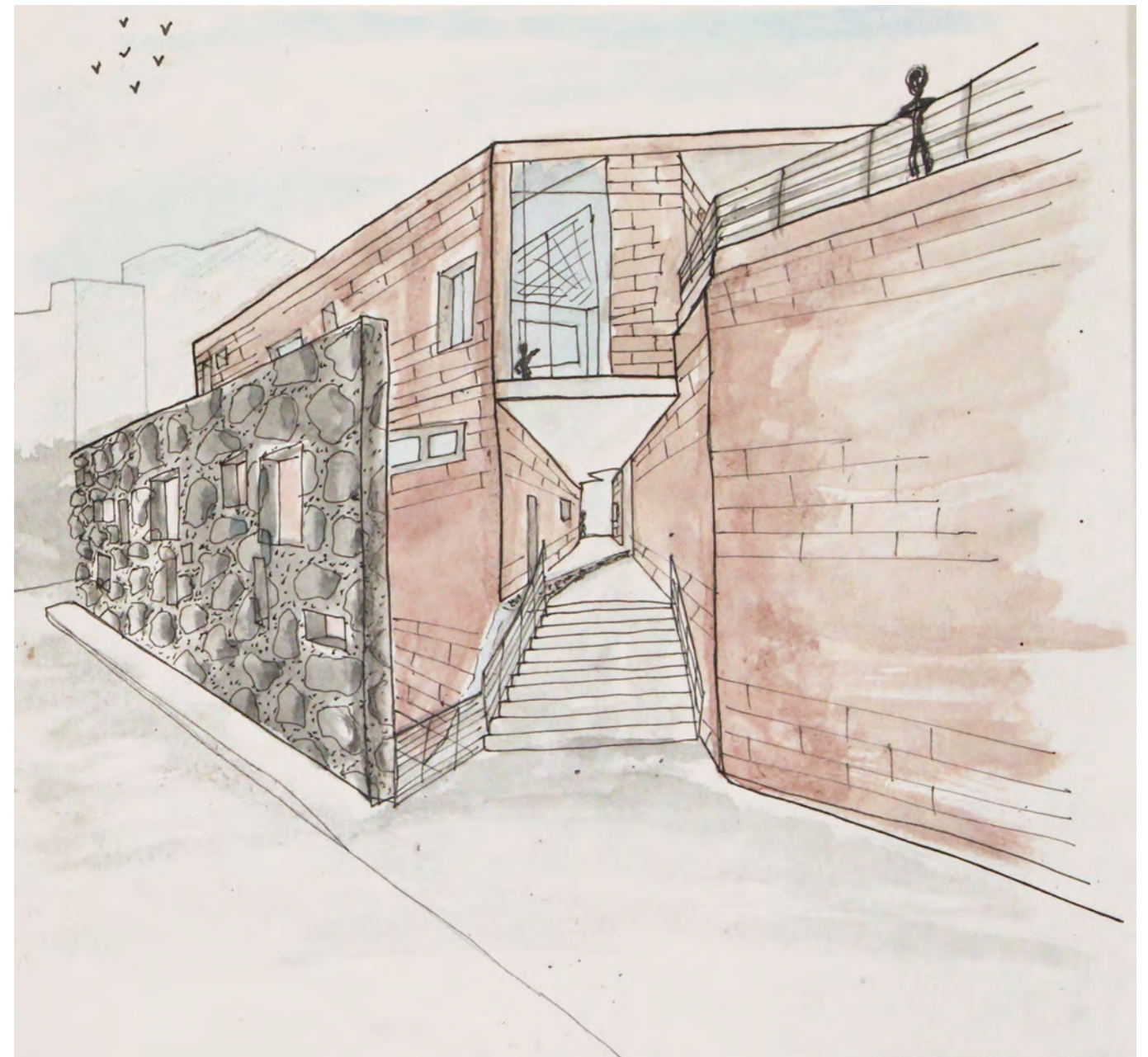
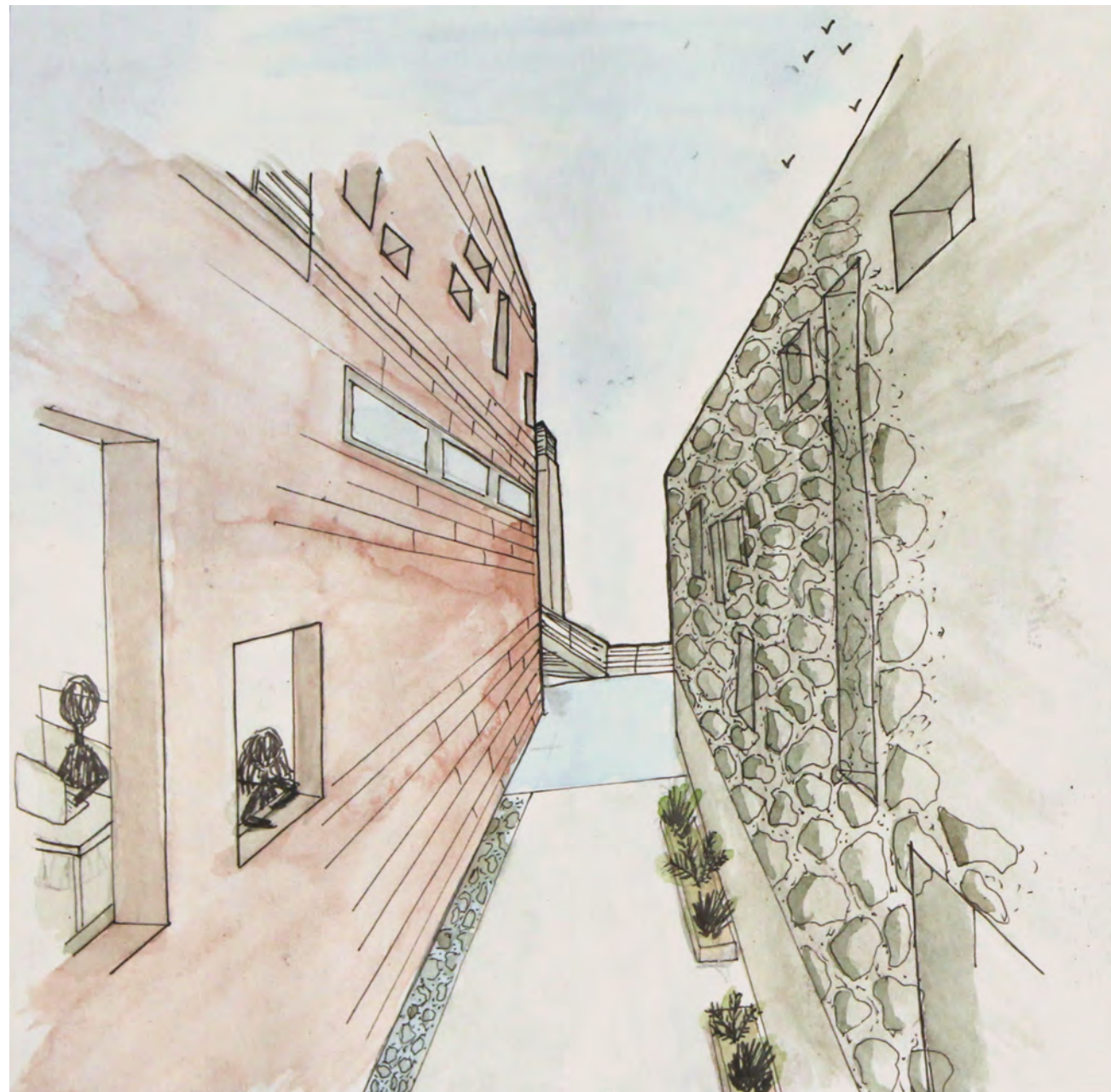
SECTIONS | SECCIONES



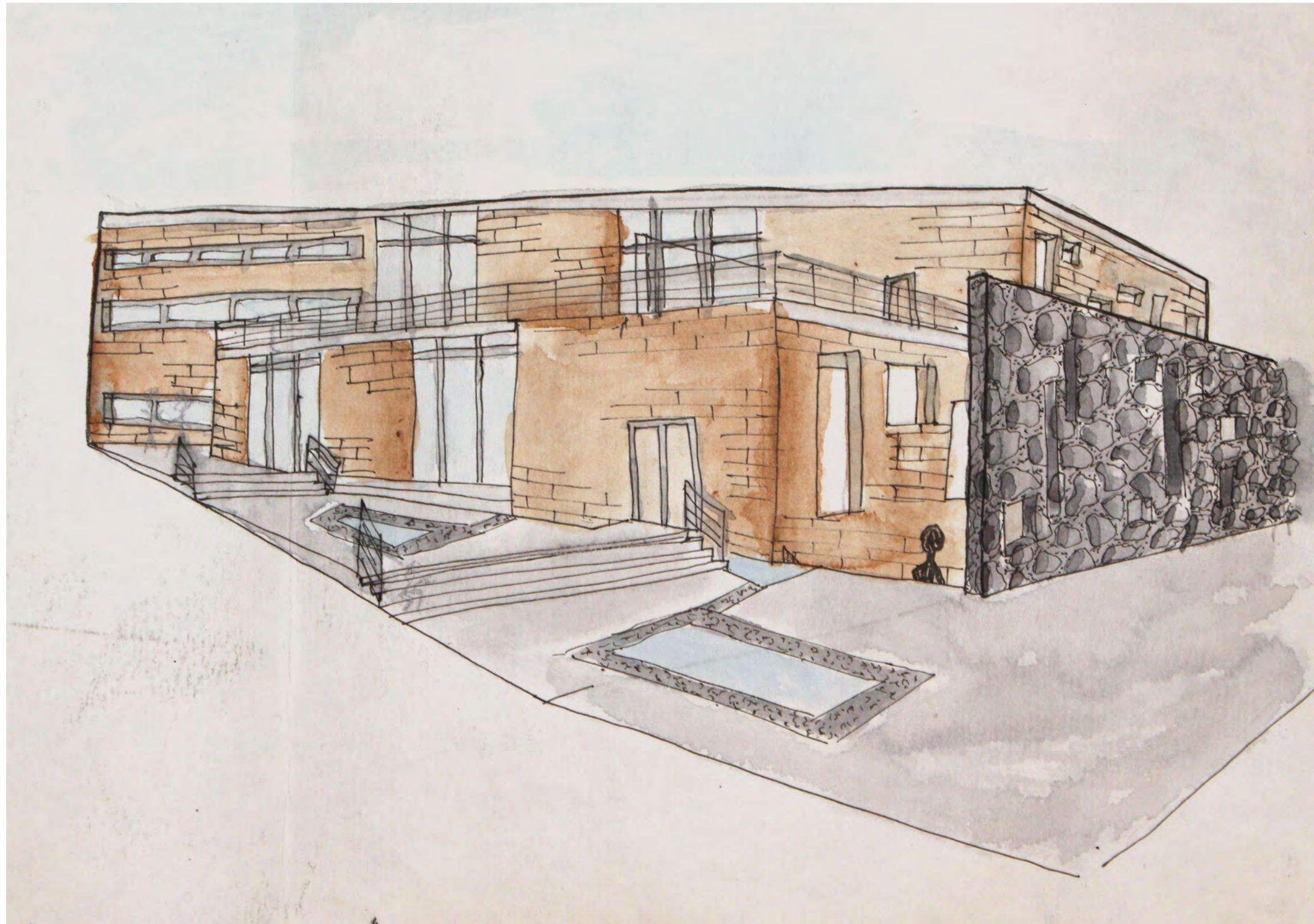
SECTION PERSPECTIVE | SECCIÓN PERSPECTIVA



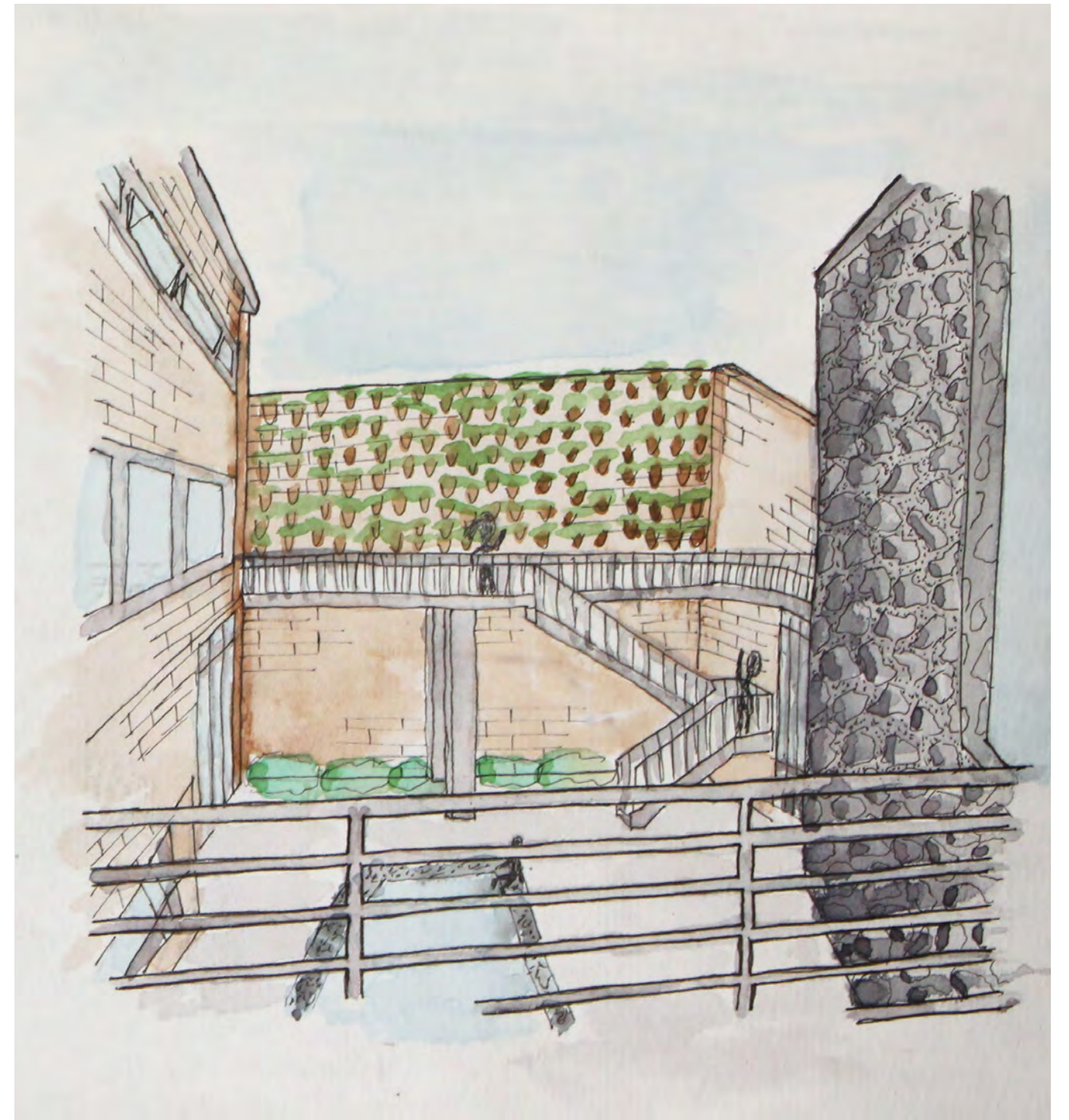
EXTERIOR RENDERINGS | RENDIMIENTOS EXTERIORES



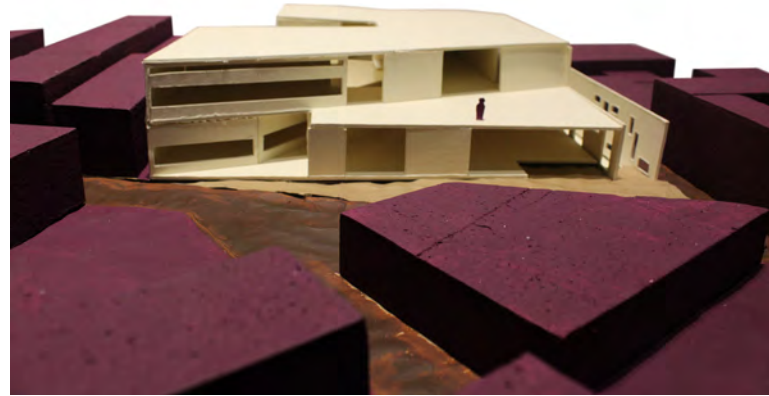
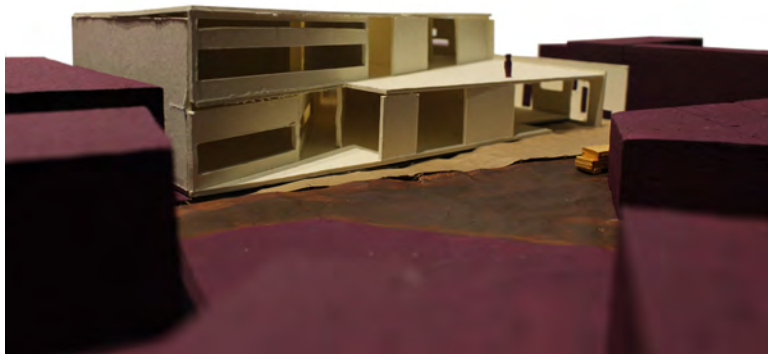
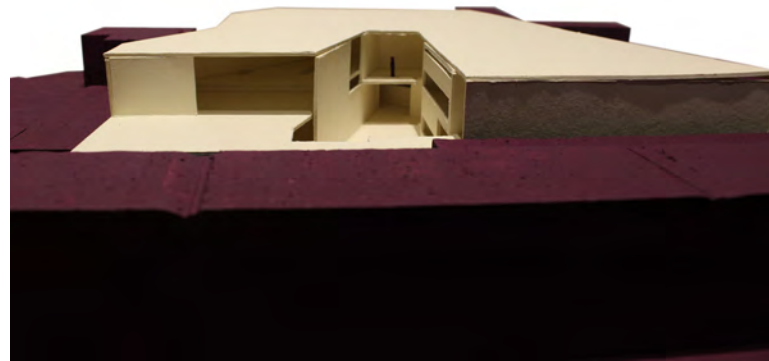
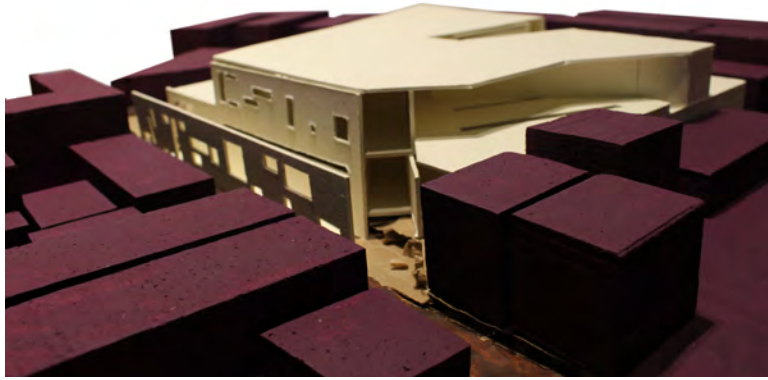
EXTERIOR RENDERINGS | RENDIMIENTOS EXTERIORES

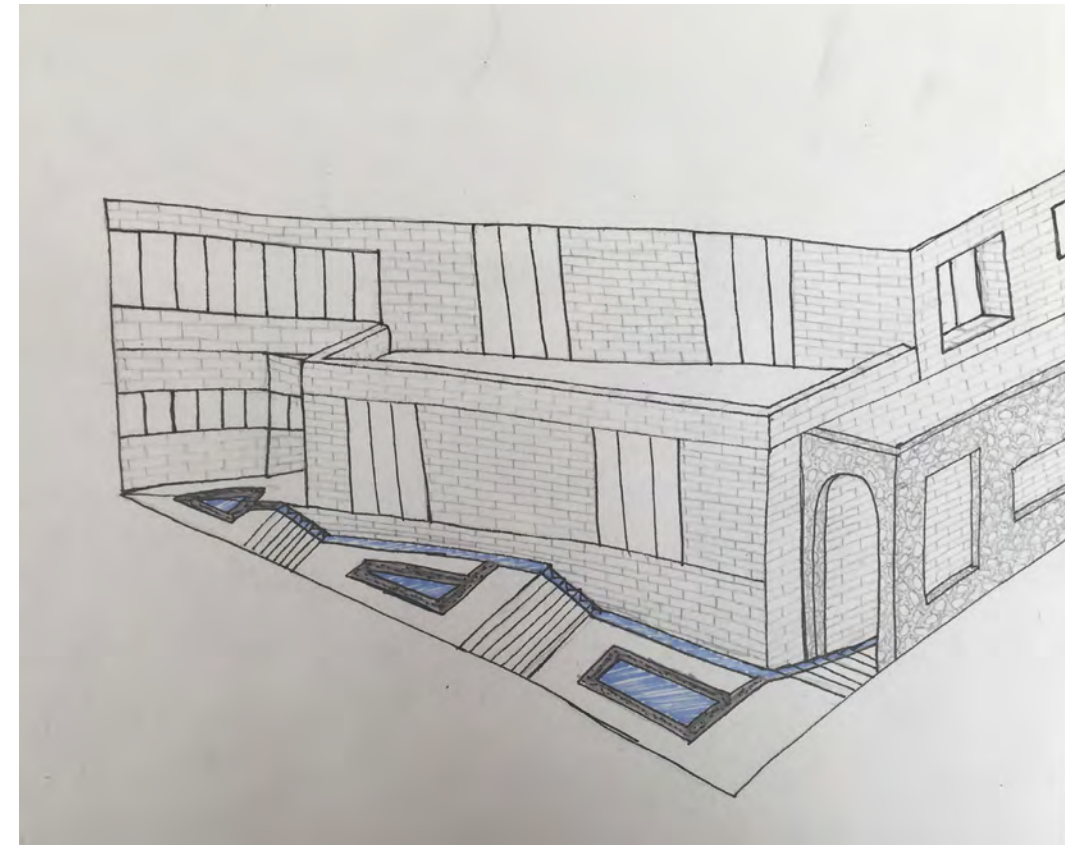
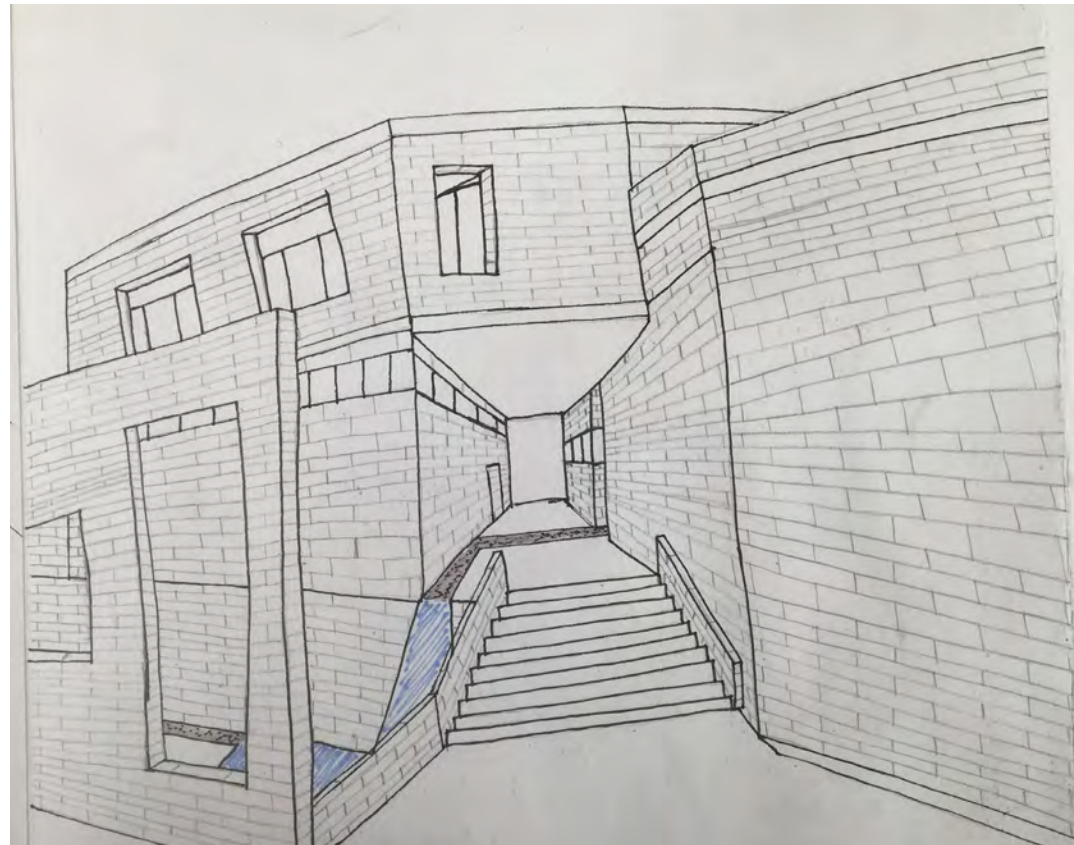
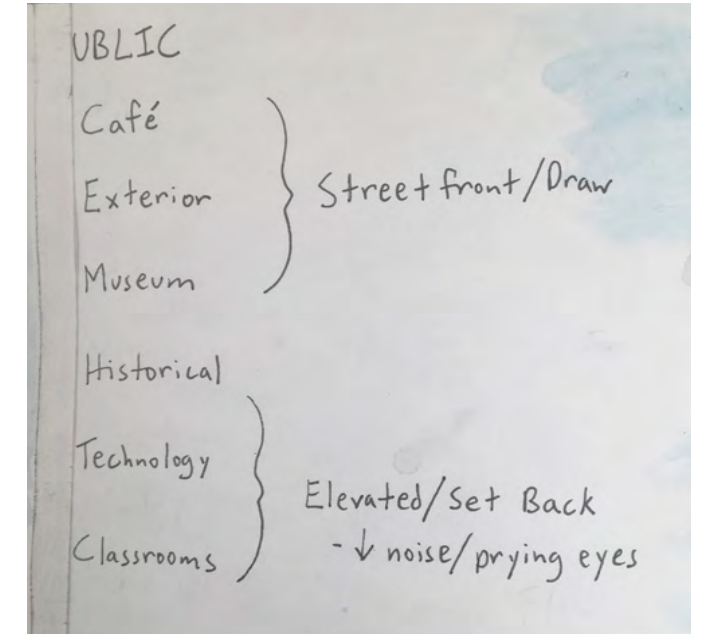
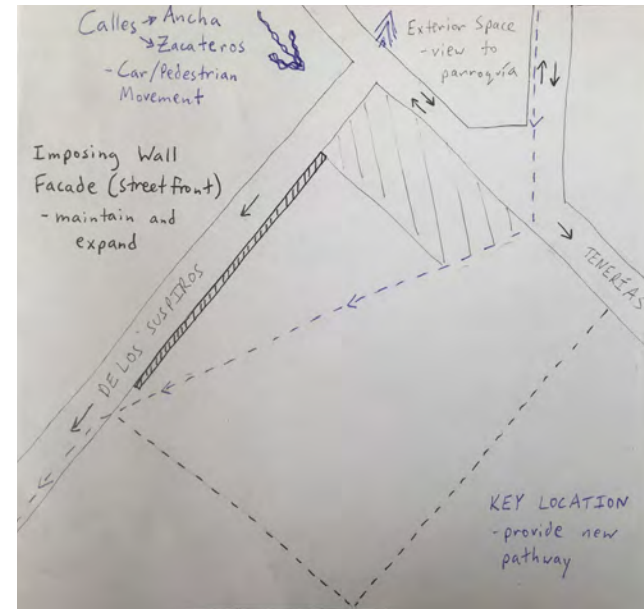
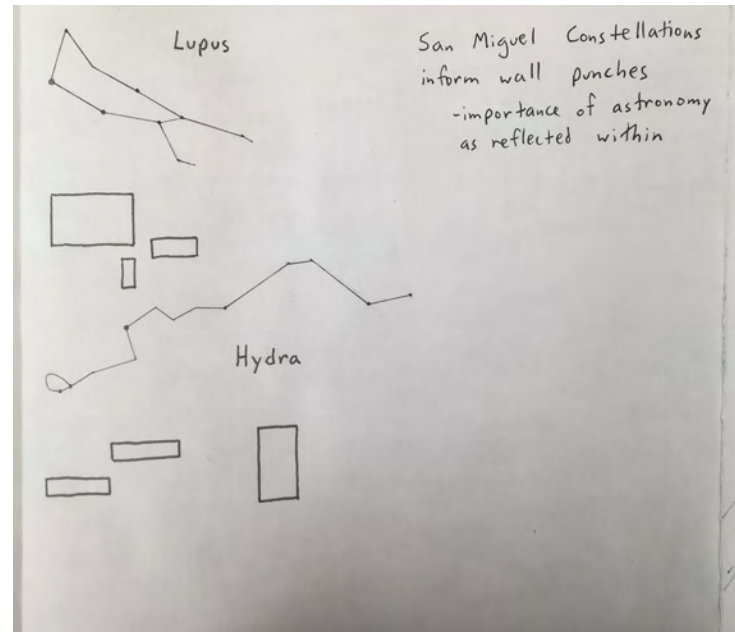


INTERIOR RENDERINGS | RENDIMIENTOS INTERIORES



MODEL | MODELO







## REFERENCES | REFERENCIAS

<http://feedthehungry.org/about/news/water-solution.html>

<http://www.atencionsanmiguel.org/2013/10/11/nuestras-comunidades-%E2%80%93-our-communities/>

<https://caminosdeagua.org/>

<http://feedthehungry.org/about/news/water-solution.html>

<https://www.nytimes.com/2016/05/20/world/americas/mexico-water-farms-drought.html>